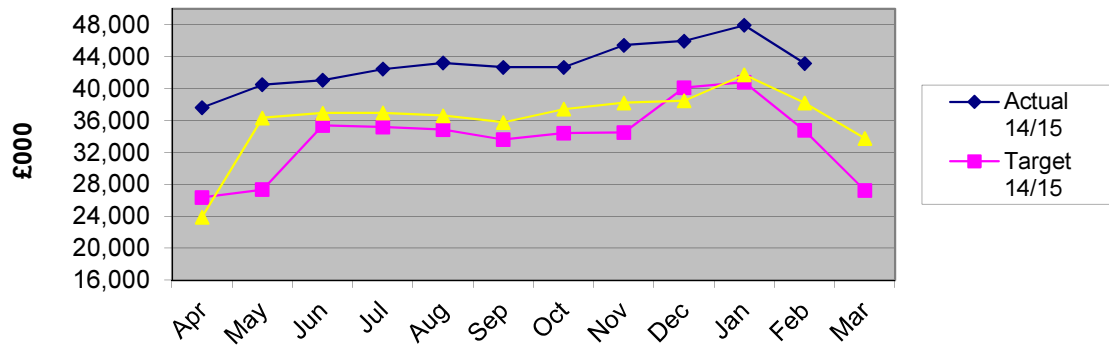


**Finance & Resources Advisory Committee Finance Indicators 2014/15
as at end February 2015**

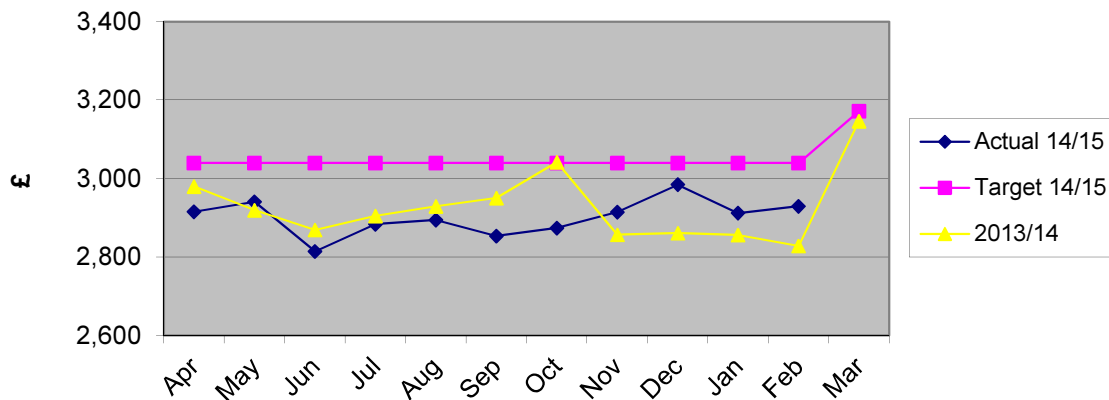
Description	target	actual	Variance		notes	graph
Monthly investment balance £000	34,846	43,148	8,302	23.8%	Total investments at month end. From April 2013, precepts are paid in 12 instalments of roughly £5m. (Previous years we paid in 10 instalments - not June or December). The target figures have been updated to reflect the Balance Sheet position as at 31/03/13.	1
Average monthly cost per employee (non cumulative) £	3,039	2,889	-150	-4.9%	Target is annual pay budget divided by budget ftes, figures include agency and casual staff. Actuals excludes costs and fte of Agency staff at Dunbrik.	2
Average monthly salary cost SDC £'000	1,107	1,044	-63	-5.7%	Excludes numbers and costs of Dunbrik temps	
Number of ftes	362.9	386.2	23.3	6.4%	Target is budgeted ftes.	3
Council Tax % collected for 2014/15	97.7	97.5	-0.2	-0.2%	LPIFS 19. Monthly cumulative figures	-
NNDR % collected for 2014/15	97.9	94.4	-3.5	-3.6%	LPIFS 20. Monthly cumulative figures.	-
Council Tax payers % on direct debit	72.0	78.1	6.1	8.5%	LPIFS8 - % on direct debit	4
Investment return %	0.80	0.57	-0.23	-28.4%	Cumulative return on investments. Target is budget assumption	5
3 month LIBID		0.42	0.42			
7 day LIBID		0.35	0.35			
Sundry debtors: debts over 21 days £000	35	29	-6	-16.0%	21 days is taken as the base as the first reminder is issued after 3 wks.	6
Sundry debtors: debts over 61 days £000	20	13	-7	-34.2%	61 days is when the third reminder is issued (debts exclude items on 'indefinite hold', e.g. debtors in administration)	7

**Finance & Resources Advisory Committee Finance Indicators 2014/15
as at end February 2015**

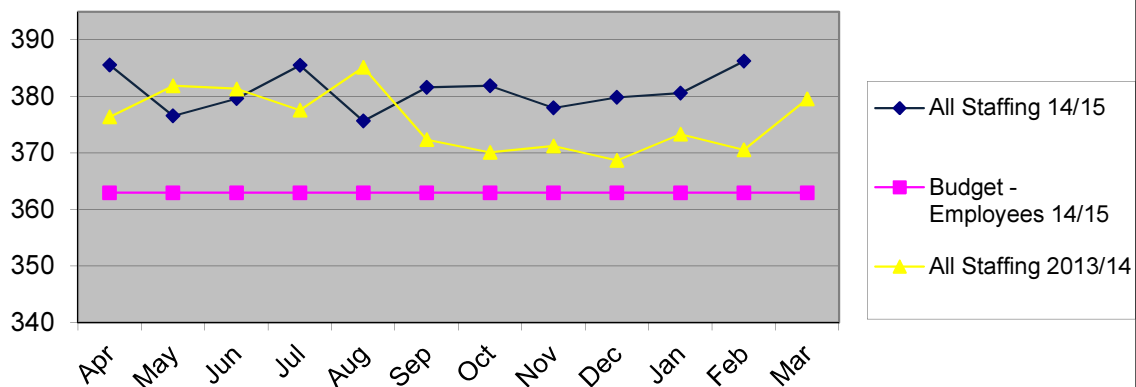
Graph 1 - Monthly Investment Balance



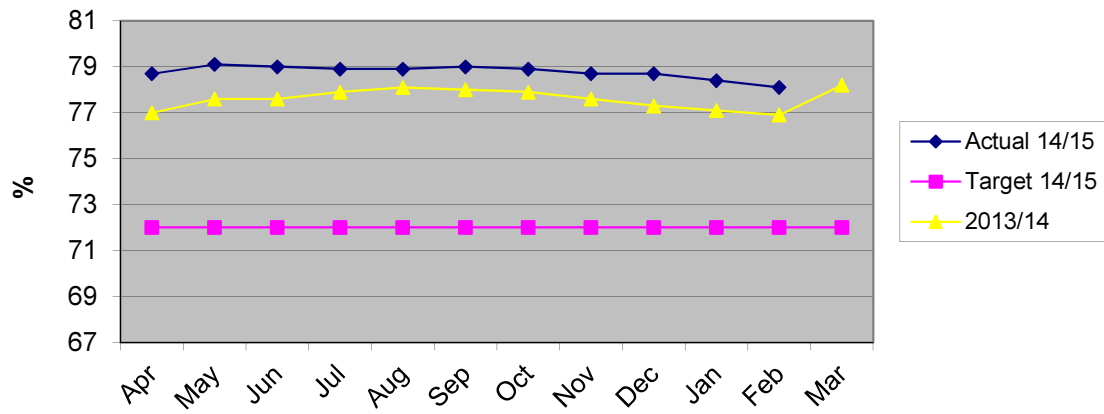
Graph 2 - Av. monthly cost per fte (inc non Dunbrik agency staff)



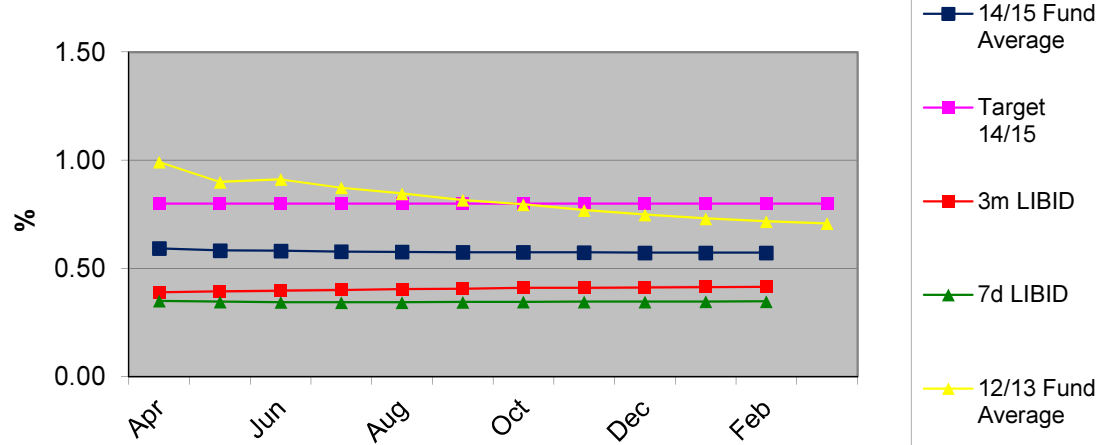
**Graph 3 - Total staffing
(inc. all agency staff inc those funded through Trading A/c)**



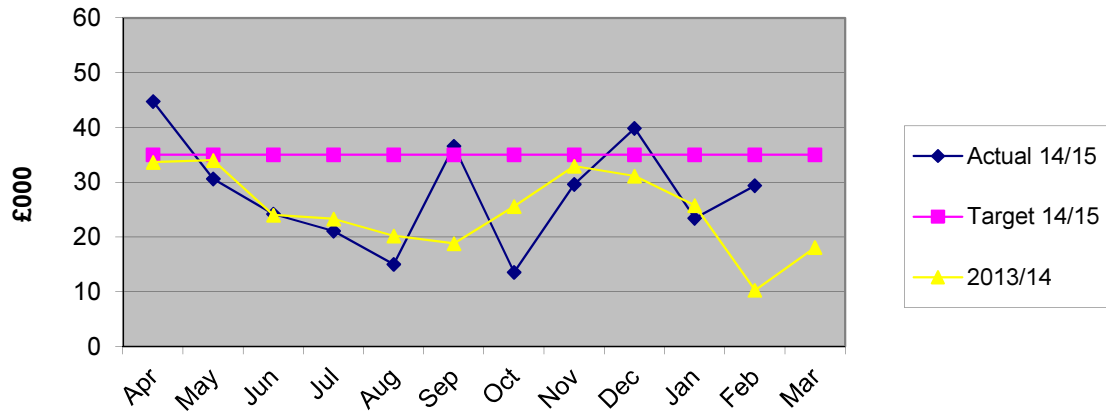
Graph 4 - Council Tax % on direct debit



Graph 5 - Investment Return %



Graph 6 - Sundry debts over 21 days



Graph 7 - Sundry debts over 61 days

